

CARLYLE COLLECTION

Inspired by the classic elegance of its namesake Manhattan hotel, the Carlyle collection subtly nods to sophisticated Art Deco style. Bold geometries, sleek lines and richly hand-polished steel finishes capture a timeless aesthetic that's perfectly suited to a wide range of interiors.

Most fixtures offer a selection of domestically hand-textured art glass shades and lens materials. Choose from eight environmentally compliant finishes, including four luxurious opaque finishes and four translucent finishes that rival plated alternatives in visual appeal.

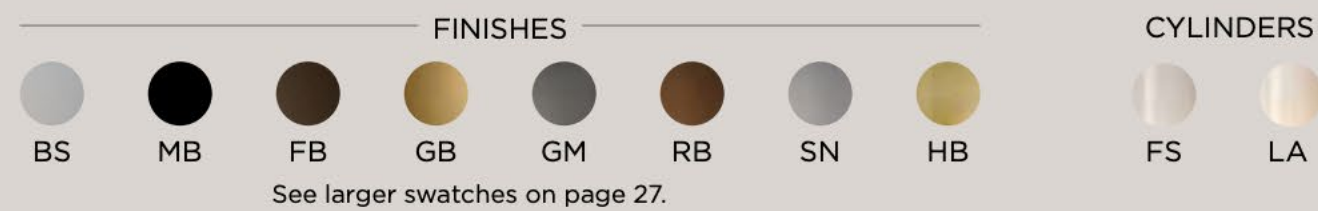


PLB0033-0B-RB-FS
Carlyle Corona Linear Suspension
Shown with
Oil Rubbed Bronze translucent finish (RB)
Frosted Seeded Glass cylinders (FS)

CORONA CHANDELIERS

Carlyle Corona ring chandeliers are offered in 24", 34" and 45" diameters, while the Corona linear suspension is offered in a 44" width. All Corona fixtures can be ordered with cylinders in your choice of two glass styles, as well as eight finishes.

Product	Descriptions	Dimensions	OAH	Electrical	Light Output
CHB0033-0C	24"D Corona Ring	6.7 H x 23.0 dia	15.0 - 146.0	Integrated LED	2,340 lumens
CHB0033-0D	34"D Corona Ring	6.7 H X 34.0 dia	24.0 - 146.0		2,965 lumens
CHB0033-0E	45"D Corona Ring	7.3 H x 45.0 dia	36.0 - 145.0		3,315 lumens
PLB0033-0B	Corona Linear	6.7 H x 44.0 W x 3.5 D	14.5 - 146.5		2,445 lumens



Integrated LED with 93+ CRI and 2,700 CCT is standard for all Carlyle Corona products. Includes matching round or rectangular canopy and adjustable cable suspension. For complete specification details and drawings on all products, visit hammertonstudio.com. Measurements are listed in inches.



CHB0033-0E-FB-FS
Corona 45"D Ring Chandelier
Shown with
Flat Bronze opaque finish (FB)
Frosted Seeded glass cylinders (FS)
Also available in 24"D and 34"D

CARLYLE

HAMMERTON BLOG

[HOME](#)[CUSTOM](#)[PORTFOLIO](#)[ABOUT US](#)[CONTACT US](#)[SEARCH](#)

HAMMERTON SIGNATURE

HAMMERTON STUDIO

LATEST POSTS



BATHROOM LIGHTING AS INSPIRATION

Oct 7, 2020

[Read More →](#)



HAMMERTON STUDIO SPOTLIGHT: THE VERSATILE GEM

Aug 19, 2020

[Read More →](#)

DESIGNER WE LOVE: STEPHANIE LARSEN

November 19, 2019

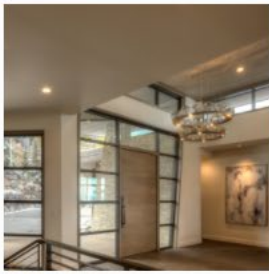


Winning awards is nothing new for designer [Stephanie Larsen](#). This year marks her tenth consecutive win of Sedona's 'Best of the Best' Award for Interior Design. Her successful career launched in Los Angeles, where she won 'Home of the Year' for her design work on a 17,000 sq. ft. home. "You're only as good as your work," Stephanie explains. "If you have integrity and do good work, great clients and great work follow you."

It was her hard work and growing reputation that allowed Stephanie to start her own eponymous business in Sedona, AZ. "I wanted a more thoughtful pace of

life, more introspective and holistic. People love Sedona, it's a spiritual capital."





HAMMERTON STUDIO SPOTLIGHT: RECENT DESIGNER WORK

Jul 23, 2020

[Read More →](#)



ARCHIVE

October 2020

August 2020

July 2020

June 2020

May 2020

April 2020

March 2020

February 2020

November 2019

July 2019

April 2019

March 2019

February 2019

January 2019

December 2018

November 2018

September 2018

August 2018

June 2018

May 2018

April 2018

March 2018

November 2017

This serenity is infused into each project. Most remodels involve removing or replacing overbearing wood paneling, bright red walls, heavy stone fireplaces and outdated southwest decor elements to achieve a calmer and more holistic design. "It's my job to work with the challenges of the space, such as an old style or footprint, and bring together the client's vision using my resources and experience."

While Stephanie personally prefers contemporary interiors, she tailors each home to her client's dream expectations -- always incorporating a subtle nod to the surrounding landscape. "It's not my dream home, it's my client's dream home," Stephanie says about her professional motto. "It's a big deal to trust someone with your sanctuary. I love seeing my client's reaction when their project is finally done and they learn the extensive detail that was necessary from start to finish."

